



CJTF-7 OIF Smart Card 2

This card has been compiled by The CJTF-7 CALL Representative
Proponent for this card is CJTF-7 / CS Training Call – CALL LNO
Camp Victory, Baghdad Iraq, APO AE 09342

Version 1.0
5 Dec 2003

CONVOY WARNING ORDER

- SITUATION: A brief statement of the enemy and friendly situation. Who, What, Where
- MISSION: Who, What, When, Where, Why
- TASK ORGANIZATION: Based on tasking from higher WARNO.
- INITIAL TIME SCHEDULE:

When	Who	What

- SPECIAL INSTRUCTIONS: PCC/PCI Guidance, Rehearsals, additional tasks to be accomplished.
- SERVICE SUPPORT:

Class I: (Rations & Water)

Class III: (POL)

Class V: (Ammunition /Pyrotechnics)

Weapon System	Rounds	Type

Pyrotechnic Device	Number	Location

Class VIII: (Medical)

- UNIFORM AND EQUIPMENT COMMON TO ALL.

Logistics Operations

CONVOY OPERATIONS



Data contained in this card has been extracted from multiple sources and compiled as a handy, pocket sized, quick reference card only. It is not intended to replace a solid unit SOP or replace unit established Battle Drills.

Sources:

- CALL No. 03-6, Tactical Convoy Operations, March 2003
- JRTC Convoy Leader Handbook, March 2002
- ARTEP 55-506-10-MTP, Plans for Movement Control Team, June 2002
- ARTEP 55-406-MTP, Plans for the Transportation Movement Control Bn, August 2002
- ARTEP 55-406-30-MTP, Transportation Movement Control, March 2000
- FM 55-30, Army Motor Transport Units and Operations, June 1997
- MPRI Convoy Leaders Training Handbook, Revision I, August 2003

VEHICLE CHECKLIST

- Completed 5988E (before PMCS) * Are there any issues yet to be resolved
- Current Vehicle dispatch *Date expiration?
- Fuel / Fluid levels topped off
- Additional Package products
- VS-17 panel
- Extra Fuel Can topped of and secured
- Class I basic load (___ MRE's / ___ Water)
- Communication check of all available systems * What are the ranges?
- Inventory of all required signal devices
- Bill complete
- Execution Matrix (Page 1 and 2)
- Tow Bar if specified
- Cargo secured IAW guidance / TM *No cargo, required devices serviceable / on-hand?
- Road Guard Belt
- Flashlight w/ extra batteries and bulb
- Map / Strip Maps
- Warning triangles
- Fire extinguisher
- Emergency Call Signs and Frequencies posted near each radio
- MEDEVAC Nine Line Format posted near each radio
- Windows and Mirrors Cleaned
- Turn Signals and Lights serviceable / functioning
- Issued Pyrotechnics

LEADER CHECKLIST

- Bino's
- Radio check (internal, cmd, A&L)
- Convoy Order & Execution Matrix
- Map with Current Graphics
- Strip Map with Extra Copies
- Sensitive Items / Personnel list
- Combat Lifesaver w/ Aid Bag (Date?)
- Current Situation Brief (Inte)
- Risk Assessment signed by the commander
- GPS (programmed with appropriate mission information / extra batteries)
- Vehicle and Personnel manifest

CFLLCC ROE CARD As it applies to Military As of: 311330Z JAN 03

1. On order, enemy military and paramilitary forces are declared hostile and may be attacked subject to the following instructions:

- Positive Identification (PID) is required prior to engagement. PID is a reasonable certainty that the proposed target is a legitimate military target. If no PID, contact your next higher commander for decision.
- Do not engage anyone who has surrendered or is out of battle due to sickness or wounds.
- Do not target or strike any of the following except in self-defense to protect yourself, your unit, friendly forces, and designated persons or property under your control:
 - Civilians
 - Hospitals, mosques, churches, shrines, schools, museums, national monuments, and any other historical and cultural sites
 - Do not fire into civilian populated areas or buildings unless the enemy is using them for military purposes or if necessary for your self-defense. Minimize collateral damage.
 - Do not target enemy Infrastructure (public works, commercial communication facilities, dams), Lines of Communication (roads, highways, tunnels, bridges, railways) and Economic Objects (commercial storage facilities, pipelines) unless necessary for self-defense or if ordered by your commander. If you must fire on these objects to engage a hostile force, disable and disrupt but avoid destruction of these objects, if possible.
- The use of force, including deadly force, is authorized to protect the following:
 - Yourself, your unit, and friendly forces
 - Enemy Prisoners of War
 - Civilians from crimes that are likely to cause death or serious bodily harm, such as murder or rape
 - Designated civilians and/or property, such as personnel of the Red Cross/Crescent, UN, and US/UN supported organizations.

- Treat all civilians and their property with respect and dignity. Do not seize civilian property, including vehicles, unless you have the permission of a company level commander and you give a receipt to the property's owner.
- Detain civilians if they interfere with mission accomplishment or if required for self-defense.
- CENTCOM General Order No. 1A remains in effect. Looting and the taking of war trophies are prohibited.

REMEMBER

- Attack enemy forces and military targets.
- Spare civilians and civilian property, if possible.
- Conduct yourself with dignity and honor.
- Comply with the Law of War. If you see a violation, report it.

These ROE will remain in effect until your commander orders you to transition to post-hostilities ROE.

An updated ROE has been requested – pending approval. As this one was originally written before the war.

PRE-COMBAT CHECKS / PRE-COMBAT INSPECTIONS

INDIVIDUAL CHECKLIST

- Weapon *Weapon cleaned, function test and appropriate lubed?
- Ammunition & Magazines * Magazines serviceable and ammunition loaded correctly
- Kevlar *Chin strap serviceable
- Flak Vest / Body Armor * Are plates properly installed and worn
- Notebook and Writing Device
- Issued Eye Protection Goggles *Clear lenses installed?
- LBE w/ 2 canteens (topped off)
- 2 First Aid Pouch w/dressing
- Flashlight w/ extra batteries and bulb
- I.D. Tags
- Military ID card
- Civilian / Military Drivers Licenses
- Combat Lifesaver Kit and ___ IV Bags x Type _____ (Expiration Dates?)
- NVGs with batteries
- OMV Keys
- Checkbook / Cash
- Attended Convoy Brief
- Attended Rehearsals

RUCK SACK / A-Bag (as needed for mission and what is the SOP for packing)

- Sleeping Bag
- 1 set DCU's
- 2 T-shirts
- 2 PR underwear
- 2 PR socks (blk / grn)
- 1 Towel
- 1 Wash Cloth
- 1 Sunscreen
- Personal hygiene kit
- JLIST Gear Complete
- Wet weather gear
- MREs - ___ each
- Work Coveralls
- Work Gloves
- Goretex top/bottom (cold weather)
- Polypro top/bottom (cold weather)
- Cold Weather Gloves (cold weather)
- Weapons Cleaning Kit w/ CLP or MILTECH

CONVOY BRIEF (Modified from FM 55-30)

Movement Order No. _____

References: A. _____ (Maps, tables and relevant documents)
B. _____

TASK ORGANIZATION: (Internal organization for convoy – Manifest)

1. SITUATION:

a. Enemy Forces:

- Weather. General forecast.
- Light Data (EENT, % Illumination, MR, MS, BMNT)
- Discuss Enemy.
 - Identification of enemy (If known).
 - Composition / capabilities / strength / equipment
 - Location (Hot Spots highlighted on map)

b. Friendly Forces:

- Operational support provided by higher headquarters.
 - Helicopter / Gunships
 - Quick Reaction Forces (QRFs)
 - MP Escorts / Rat Patrols
 - Fire Support elements

c. Attachments: (From outside the organization)

2. MISSION: (WHO, WHAT, WHEN, WHERE, & WHY)

3. Employment Tactics, Techniques and Procedures

- Readiness Level
 - Ride / Scanning (Observation)
 - At the Ready
- Scanning / Sector of Fire
 - Driver
 - Sector of Scan is 9 – 1 clock position
 - Observation with Mirrors
 - Sector of Fire is 9 – 11 o'clock
 - TC
 - Sector of Scan is 11 – 3 clock position
 - Sector of Fire is 1 – 3 clock position
 - Other Systems are based off vehicle type and load
- Target ID
 - Communicate / Signal
- Body Positioning
 - Engage as you Train (Right or Left handed Firing)
 - Firing-side Shoulder Down
 - Maintain your Body Position
 - Weapon to Head
- Rules of Engagement Concerns – Employ the appropriate systems based off the threat.
- Point of Aim
 - Moving Pattern – Stationary Target requires aim to the rear (trail) and low dependant upon speed.

3. Employment Tactics, Techniques and Procedures

- e. Point of Aim
 - ii. Moving Platform – Moving Target requires aim directly on and low.
 - iii. Stationary Platform – Moving Target requires aim to the front (lead) and low dependent upon speed.
- f. Rate of Fire
 - i. Burst Mode
 - ii. Steady Suppression (ROE)
- g. Magazine Awareness
 - i. Serviceability / maintenance
 - ii. Tracer Mix
 - iii. Magazine Storage / Placement
 - iv. Mounted, Reload when time is available

Dismounted, Seek cover prior to the need to Reload

TOPIC: Soldiers riding in HMMWVs and LMTVs are more combat ready when seated in a vehicle outfitted with center line seating.

DISCUSSION: Center line seating is the term being used to describe a modification to unit Cargo HMMWVs and LMTVs. The modification involves the addition of a center bench (of wood construction) that allows soldiers to sit oriented outward and ready to engage threat personnel or vehicles. Since adding this feature, units have experienced a reduction in attacks against convoys with such outfitted vehicles, and in cases where soldiers were attacked, the contacts have usually been more successful due to quicker reaction times and higher volume of fire.

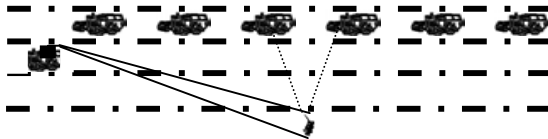
Lessons Learned: When soldiers are seated in a position that allows them to be naturally oriented outward, they are a greater deterrent to attackers and are better positioned to react to contact.



7

REACT TO ATTACK (MOVING)

(Weapons Fire / RPG / IED / Indirect)



1. Place suppressive fire on the enemy using weapon engagement techniques and proceed through the contact zone increasing speed, interval and taking caution not to bunch up.
2. Activate vehicle turn signal to indicate direction of contact (Primary).
3. Report contact on internal communication(s), identifying truck number, type of contact and clock direction.
4. PL/CC/SC will position Gun Truck in order to suppress enemy while convoy maneuvers onto attackers or proceeds through contact if not able to overcome the enemy.
5. PL/CC/SC submits SALUTE report to higher.
6. Convoy will proceed to Rally Point "Forward".
7. Gun Truck repositions to rear as convoy passes through contact zone.

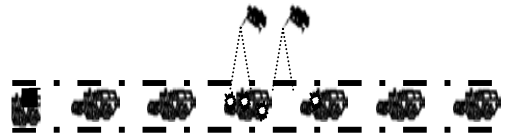
Indirect Fire Concerns: Use an alternate route if it is determined that an MSR is under enemy observation.

Casualty Concerns: In the event of a casualty, the vehicle with the casualty will signal using four-way flashers and if possible provide report via communication.

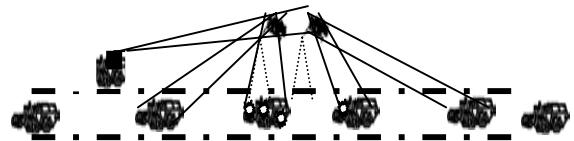
8

CONVOY FORCED TO STOP

(Weapons Fire / RPG / IED / Indirect)



1. Vehicles forced to stop. Activate vehicle turn signal to indicate direction of contact.
2. Vehicle(s) / Personnel not in direct contact, report on internal communication, identifying truck number, type of contact and clock direction.
3. Personnel on vehicle(s) forced to stop dismount on the non-contact side, assume covered position(s) and provide initial base(s) of fire.
4. The entire convoy halts; personnel will dismount vehicle(s) on the non-contact side and provide additional bases of fire on the enemy if in range. Vehicle(s) not in contact will be repositioned to provide additional base(s) of fire or used to provide convoy 360° security. M16's should now be on Semi-Automatic in order to conserve ammunition.
5. PL/CC/SC will move to better assess the situation and position the Gun Truck(s) in order to best suppress the enemy while maintaining standoff. Gun trucks will close with and engage the enemy.



6. Once the PL/CC/SC determines the convoy has either gained fire superiority or defeated the enemy contact, Recovery / CASEVAC operations will begin.
7. If the PL/CC/SC determines the convoy cannot gain fire superiority, leader will then conduct Break Contact procedures

9

RALLY POINTS (Floating)



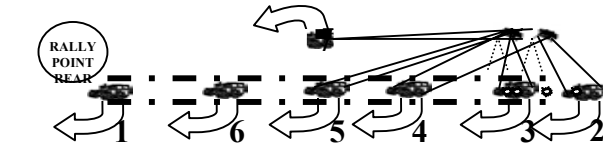
1. Occupation of the Rally Point is necessary to conduct Consolidation and Reorganization. It is critical that the convoy be secured and tasks are conducted as quickly as possible. Rally Points will always be conducted following contact unless directed otherwise.
2. Primary signal is communication; alternate signal is hand-held smoke (day) and star-cluster (night). Colors will be specified in the convoy brief based on the available pyrotechnics.
3. Rally Point "Forward" will be located 2 miles in the direction of movement and Rally Point "Rear" will be located 2 miles to the rear of movement.
4. Vehicles will position in a box formation. If possible, the side of the road will be used if conditions are appropriate and safe for all vehicles. A command and control vehicle will be positioned inside the safe area.
5. Drivers and passengers dismount and establish perimeter security using the safe side of vehicles for cover. Personnel will exit vehicles on the safe side.
6. Gun Truck moves to a position in which best supports convoy, normally the rear.
7. If mileage places the Rally Point in a built up area, convoy will continue in the direction of movement until beyond the built up area.
8. Once security is established, leaders will immediately conduct Consolidation and Reorganization

10

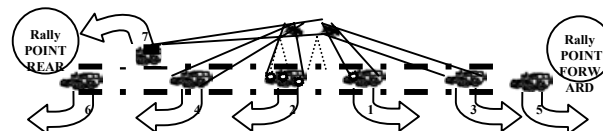
BREAK CONTACT

Always try to close with and destroy the enemy first. This way he cannot come back later on to attack you or another convoy again.

1. The PL/CC/SC determines the convoy cannot gain fire superiority and the decision has been made to Break Contact.
2. The PL/CC/SC designates that either Rally Point "Rear" or "Forward" will be used. If necessary, both Rally Points may be used. Communication systems and appropriate pyrotechnic signals will be used to communicate Break Contact and Rally Point.
3. Personnel will deploy obscuration measures if available. Utilizing cover and concealment, Aid & Litter team(s) will evacuate all casualty(s) under support of Gun Truck and other protective fire(s).
4. Personnel will maintain position and suppression in contact zone and assist Aid & Litter team(s) as necessary.
5. Disabled vehicle(s) will be abandoned or destroyed as directed by leaders. (Thermite or explosives)



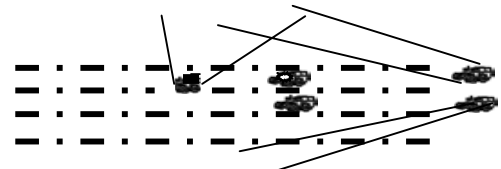
6. Vehicles will displace either backwards or forwards through the convoy lines under control of leaders. The most forward vehicle in the contact zone moves first, then the next most forward vehicle moves second. Vehicles will continue to displace. As vehicles displace, Gun Truck repositions as necessary until contact is broken.



7. If Break Contact occurs with vehicles on both sides of the contact zone, displacement of vehicles will occur using an alternating displacement technique.
8. Upon occupation of the Rally Point, leaders will immediately position vehicles, security, and conduct Consolidation and Reorganization.
9. If the convoy vehicles get separated when not in contact with the enemy, personnel and vehicles stay together and move to the closest Rally Point or Check Point.

11

RECOVERY / CASEVAC OPERATIONS



1. Once the leader assesses the enemy threat to be destroyed, neutralized, defeated and the area secured – Recovery / CASEVAC operations will begin. This keeps soldiers focused first on defeating and destroying the threat.
2. CASEVAC:
 - a. Aid & Litter team will position on the safe side of the vehicle and extract casualty(s) and personnel.
 - b. Treatment of casualty(s) will occur once they are safely removed from the contact area.
3. Vehicle Recovery Procedures:
 - a. Recovery team will position on the safe side of the disabled vehicle.
 - b. TC will dismount and assess the disabled vehicle.
 - c. If determined the vehicle can be safely recovered, TC guide the recovery vehicle into position and conduct a hasty hook-up. TC will operate the disabled vehicle is necessary.
 - d. Upon exiting the contact area, complete and correct hook-up procedures will occur.
 - e. If assessment results in outside support necessary for recovery, leader will contact higher for guidance.
4. Once recovery operations are complete, the team will displace and conduct link-up with the convoy at the Rally Point.
5. Disabled vehicle(s) will be abandoned or destroyed as directed by leaders. (Thermite or explosives)

12